

GS-P1-RN16D Specification



Technical Features

- New GUI, convenient and easy to use, supports functions, such as automatic addition, cross-network segment addition and other functions.
- The camera can be automatically reconnected after changing IP
- Support power amplifier speakers and 3.5mm audio output interface
- Support audio intercom (with headset two-in-one adapter)
- Support VGA、HDMI display simultaneously; HDMI maximum support 2K
- Support HDMI audio output;
- Support APP push alarm function

- Support cloud updating function;
 - Support human detection, face detection and vehicle detection function; (need camera support)
 - Support alarm linkage, local voice broadcasting and other functions, and support intelligent playback of human detection, face detection and car detection;
 - Can connect 16ch 5MP cameras;
 - Support ONVIF protocol
 - Support GB28181 protocol to facilitate platform access
 - Support network and USB backup function, and the backup can be accurate to seconds
 - Can control IPC image parameters setting.
-
- Support remote monitor and playback via EasyVMS
 - APP P6slite can be used for remote monitoring and playback of video;
 - You can use APP p6site to scan the code and log in locally

Product Parameters

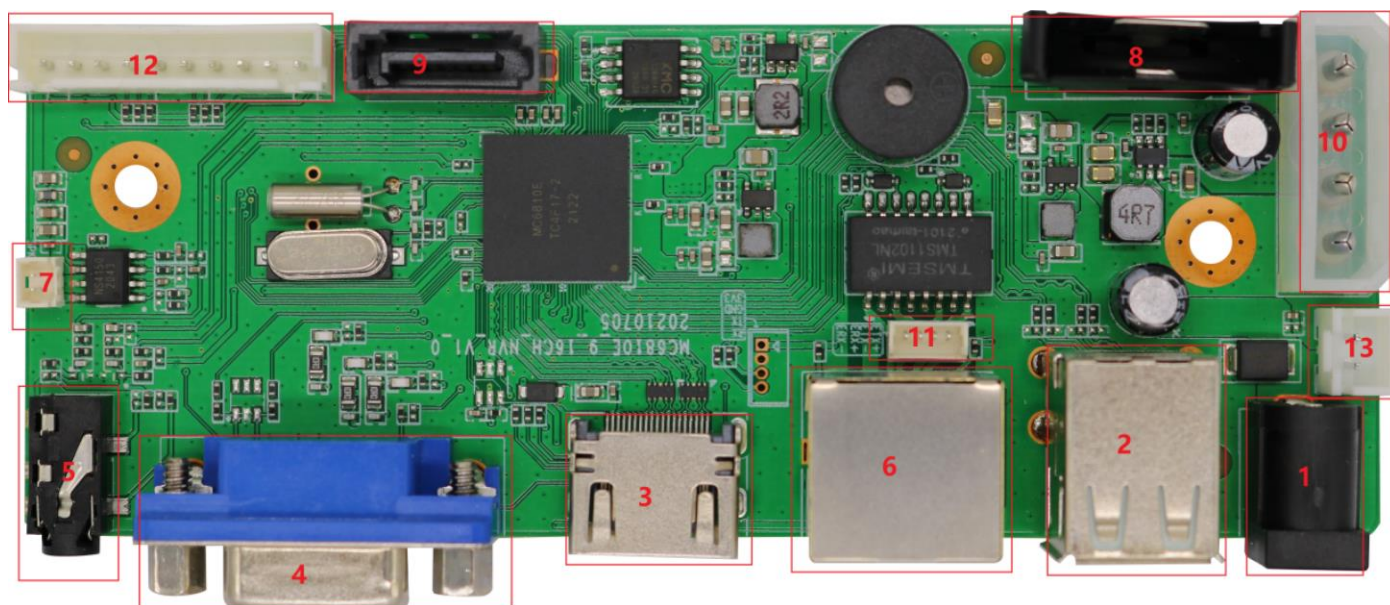
System	
Model	GS-P1-RN16D
Main chipset	A1N

Tel: +86-755-28510749 Fax: +86-755-28510749 Web: <http://www.grandsecu.com.cn>
Add: No.11 Xiantian Road, Longgang District, Shenzhen 518000

Operation system	Embedded Linux operating system
Interface	
Operation interface	16 bits graphic interface, support mouse and keyboard operation
Image display	1/4/6/9/16 screen
Video	
Video access	16ch 5MP, Support dual stream
Video frame	30fps
Video output	VGA*1, HDMI*1
Image decoding	H.264/H.265
PTZ control	Control the front-end camera with PTZ equipment through the network
Playback channels	1CH 5MP / 2CH 4MP / 4CH 3MP playback
Record modes	Timing record, motion detection record , manually record , intelligent record
Record query	Time playback, browsing playback, intelligent playback, event retrieval
Intelligent function	
Motion detection	Support (Need camera support)
AI alarm	Support human detection+ face detection +Vehicle detection function, linkage push, big screen and voice broadcasting alarm functions
AI playback	Support AI human playback, face playback and vehicle playback function, playback is more accurate.
Audio	
Voice alarm	supports local audio warning broadcast linkage, built-in a variety of warning voice
Voice format	G.711U G.711A G.726
Audio intercom	Support
Audio input	1:1 network audio input according to the number of channels
Audio output	Support HDMI audio output, 3.5mm audio output, 1.25pin connect with loudspeaker sound output
Storage backup	
Video storage	Local hard disk, network(Easyvms remote recording)
Backup type	Network backup, U-disk
Remote monitoring	
Mobile monitoring	P6SLITE
PC monitoring	Support VMS on LAN or WAN remote monitoring
Protocol	Support TCP/IP,IPv4,DHCP,NTP,RTSP,ONVIF,P2P,GB28181, etc
Outer interface	

Video output	1pcs VGA, 1pcs HDMI
Network interface	1pcs RJ45 10/100M, self-adaptive ethernet interface
USB	2pcs USB 2.0 interface
Hard disk	1pcs SATA 2.0; SATA interface maximum support 8T
Other	
Power	DC12V 2A
Consumption	≤15W (bare machine)
Working environment	-10℃~+50℃

Definition of interface



he
co

1	DC 12V	2	USB	3	HDMI
4	VGA	5	3.5 inch audio interface	6	RJ45
7	Loudspeaker interface	8	Battery	9	HDD data interface
10	HDD power interface	11	Network expansion	12	Front panel GPIO interface
13	12V output				

Content in the manual only provides guidance for users, our company will update the content in the instructions depending on the product function enhancing or changing, and we will improve or update the software functions described in the manual. The updated content will be explained in new edition manual, without notice